

Memo



Stantec

To:	Rodney Bouchard	From:	Gary Deonarine
	Regional Municipality of Peel		Stantec London
File:	165500512	Date:	March 19, 2010

Reference: Oakville WTP Intake Coordinates Review

The purpose of this memorandum is to respond to an inquiry from the Regional Municipality of Halton (Halton) regarding the Oakville WTP intake coordinates.

It was brought to our attention in late 2009 that the intake location provided in the *Addendum to the Final Phase 1 Report for the Regional Municipality of Halton* may not have been correct.

Stantec investigated this potential discrepancy with the modeling team (HCCL). The result was that the original intake coordinates that were provided by Halton in October 2006 to Stantec were in fact modeled and reported accordingly in Stantec's report with the exception of the Intake Protection Zone (IPZ) delineation map. The mapping indicated an incorrect intake location yet the IPZs were illustrated correctly. Refer to the attached Intake Location Inquiry map for additional details.

At the time of map revision, the IPZ-1 shoreline setback was adjusted to adhere with the Technical Rules (November 2009). The revised map and GIS files are attached to this document for your use. I apologize for the error in illustration and if you have any questions pertaining to this work please contact the undersigned.

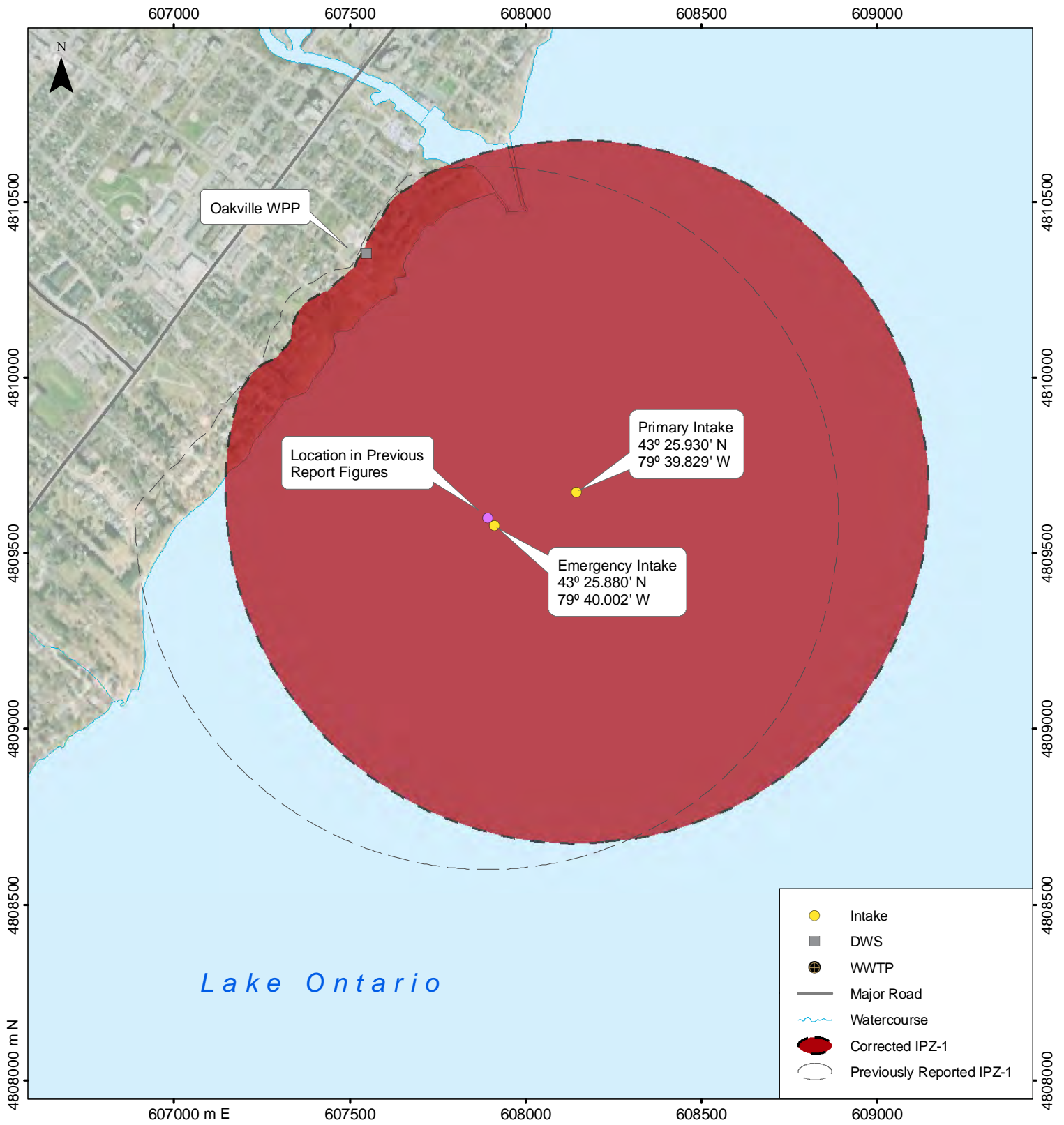
STANTEC CONSULTING LTD.

Gary Deonarine, EIT
Project Coordinator
gdeonarine@stantec.com

Attachment: 1) Oakville Intakes Location Inquiry map
2) Revised IPZ Map Oakville WTP
3) GIS files (.zip format)

c. Kurli, Sudhakar

One Team. Infinite Solutions.



Stantec



Imagery used under license with Google Earth.
Topographic data used under license with
Natural Resources Canada and Ontario
Ministry of Natural Resources.
Copyright © 2010 Stantec Consulting Ltd.
Projection: UTM Zone 17N, NAD 1983



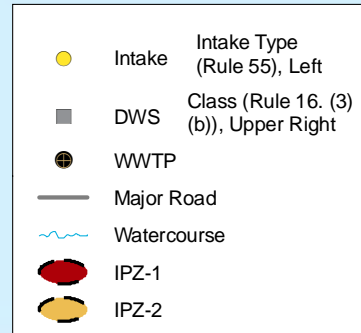
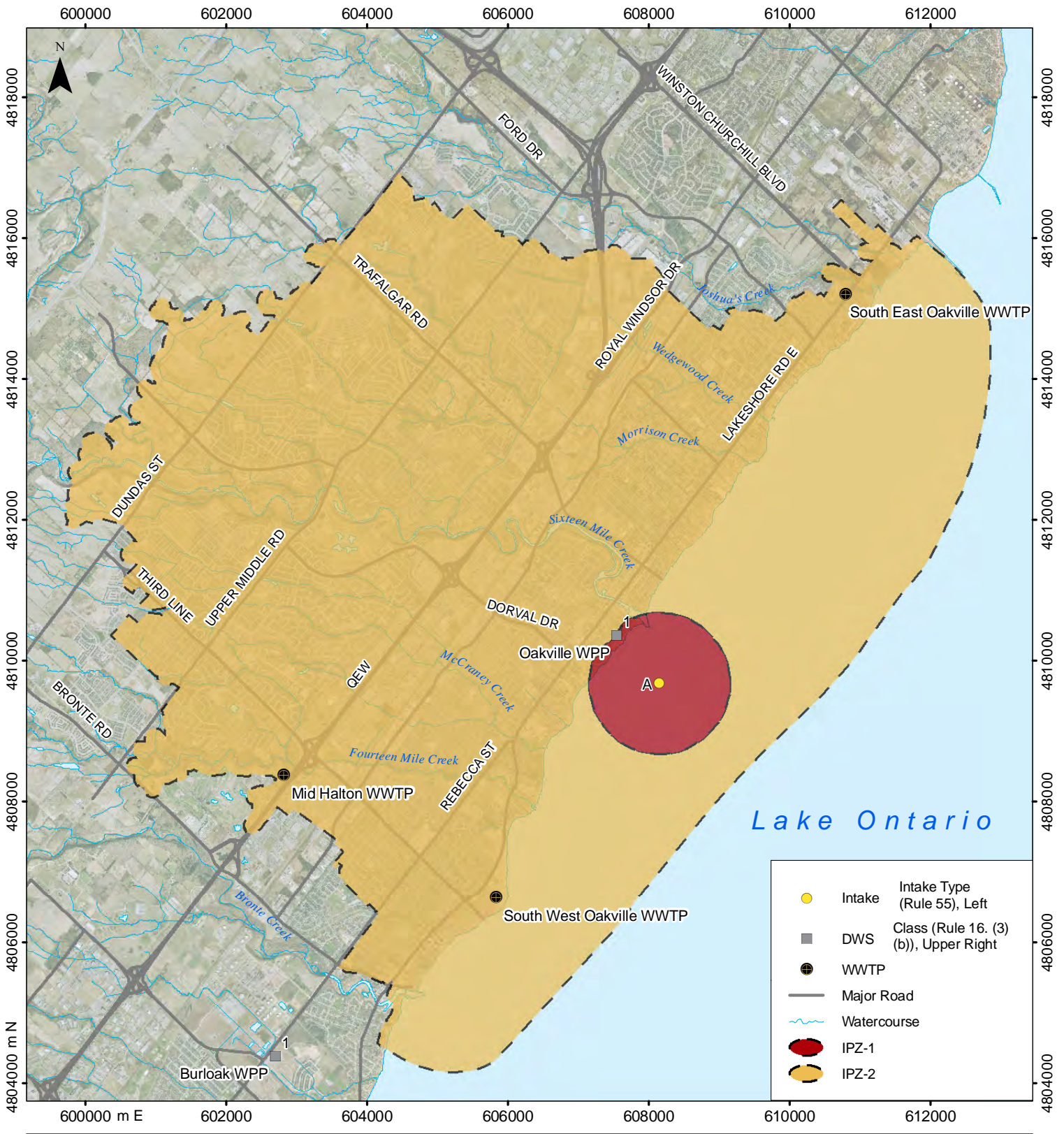
Project

**Lake Ontario Collaborative Source
Protection Technical Studies**

Figure No.	Revision No.	Date
1	4	Mar. 2010

Title

**Oakville WPP
Intake Locations**



Stantec

Imagery used under license with Google Earth.
 Topographic data used under license with Natural Resources Canada and Ontario Ministry of Natural Resources.
 Copyright © 2010 Stantec Consulting Ltd.
 Projection: UTM Zone 17N, NAD 1983



Project

Lake Ontario Collaborative Source Protection Technical Studies

Figure No.	Revision No.	Date
2	4	Mar. 2010

Title

Oakville WPP Intake Protection Zones

