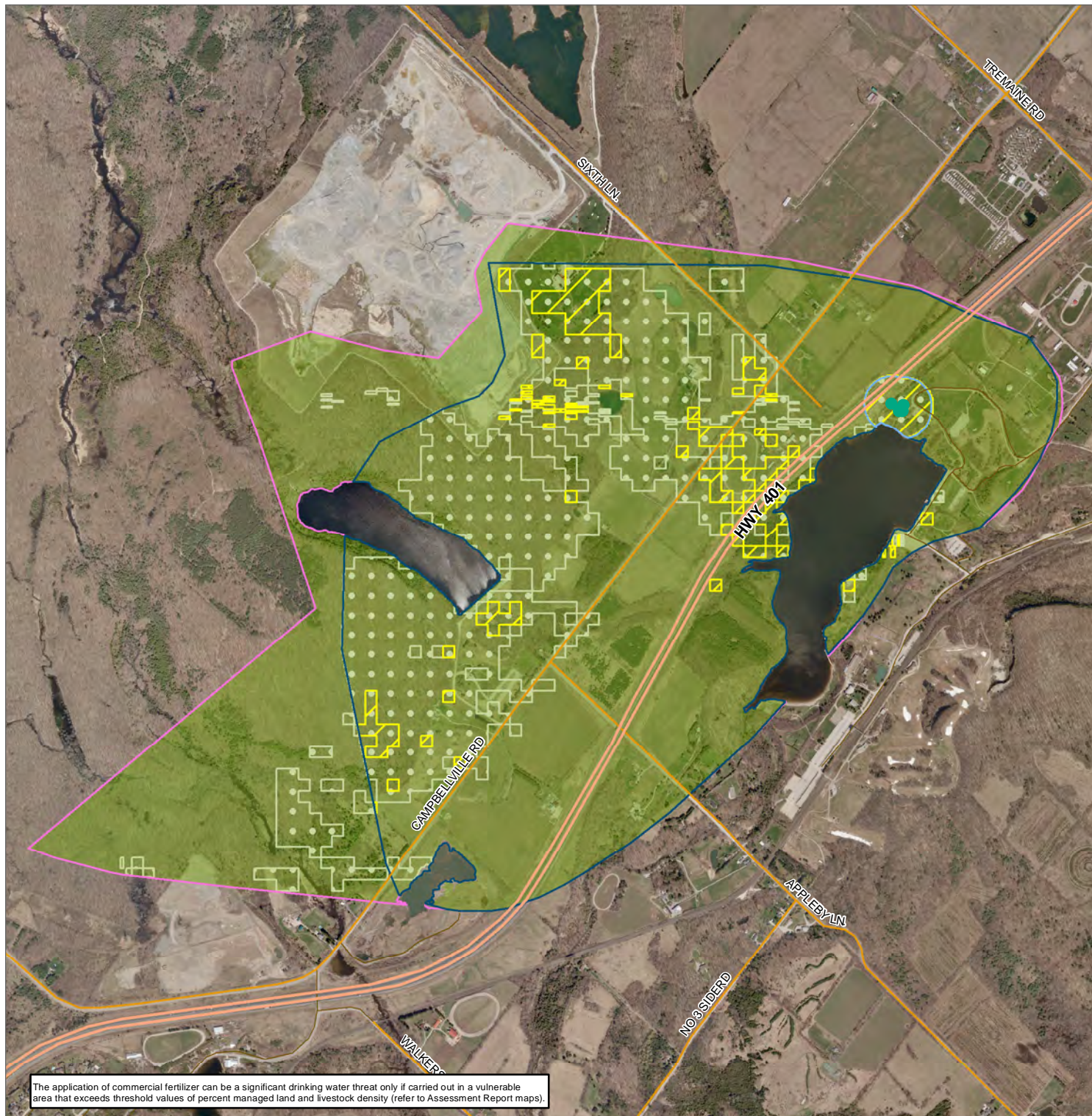


Figure 2
Kelso
Existing and would be significant groundwater threat areas



- Legend**
- WHPA Boundary**
- A
 - B
 - C
- GW - Significant Threats - Group 1
 GW - Significant Threats - Group 2
 GW - Significant Threats - Group 3
- Roads**
- Highway
 - Regional
 - Local
 - Municipal Well

Group 1: (WHPA-A-10, WHPA-B-10)

- Waste Disposal Site - Application of Untreated Septage to Land (Chemical and Pathogen)
- Waste Disposal Site - Mine Tailings (Chemical)
- Waste Disposal Site - Landfarming of Petroleum Refining Waste (Chemical)
- Waste Disposal Site - Landfilling (Hazardous Waste) (Chemical)
- Waste Disposal Site - PCB Waste Storage (Chemical)
- Waste Disposal Site - Storage of Hazardous Waste at Disposal Site (Chemical)
- Waste Disposal Site - Storage of Waste Clauses (p),(q),(r),(s),(t),(u) (Chemical)
- Sewage - Discharge from stormwater retention pond (Chemical and Pathogen)
- Sewage - Sanitary Sewers and Related Pipes (Chemical and Pathogen)
- Sewage - Septic System (Chemical and Pathogen)
- Sewage - Septic System Holding Tank (Chemical and Pathogen)
- Sewage - Sewage Treatment Plant Effluent Discharges (Chemical and Pathogen)
- Sewage - Storage of Sewage (Pathogen)
- ASM - Application (Chemical and Pathogen)
- ASM - Handling and Storage (Chemical and Pathogen)
- NASM - Application (Chemical and Pathogen)
- NASM - Handling and Storage (Chemical and Pathogen)
- Commercial Fertilizer - Application (Chemical)
- Commercial Fertilizer - Handling and Storage (Chemical)
- Pesticides - Application (Chemical)
- Pesticides - Handling and Storage (Chemical)
- Road Salt - Application (Chemical)
- Road Salt - Handling and Storage (Chemical)
- Snow - Storage (Chemical)
- Fuel - Handling and Storage (Chemical)
- Organic Solvent - Handling and Storage (Chemical)
- Runoff Management - Aircraft De-icing Chemicals (Chemical)
- Use of land for livestock - Grazing and Pasturing (Chemical and Pathogen)
- Use of land for livestock - Confinement Yard (Chemical and Pathogen)

Group 2: (WHPA-A-10, WHPA-B-10, WHPA-B-8, WHPA-C-8)

- Waste Disposal Site - Landfilling - Municipal Waste (Chemical)
- Waste Disposal Site - Landfilling - Solid Non Hazardous Industrial or Commercial (Chemical)
- Waste Disposal Site - Liquid Industrial Waste Injection Into Wells (Chemical)
- Sewage - Storage of Sewage (Chemical)

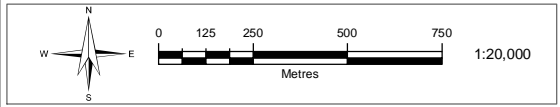
Group 3: (WHPA-A, WHPA-B, WHPA-C)

- DNAPL - Handling and Storage

GW: Groundwater
 WHPA-A-10: Wellhead Protection Area A - Vulnerability Score of 10

Reference: Prescribed threat circumstances as listed in the Ministry of the Environment Table of Drinking Water Threats (2009)

Source: Conservation Halton
 Date: April 2015
 Projection: UTM NAD 83 Zone 17



The application of commercial fertilizer can be a significant drinking water threat only if carried out in a vulnerable area that exceeds threshold values of percent managed land and livestock density (refer to Assessment Report maps).